

*National Hispanic
Women's Ministry
(Disciples of Christ)*



"Empowering Women
for Ministry,
Generation to Generation"



INCLUDED IS MY OFFERING OR DONATION FOR: \$ _____
PLEASE MAKE PAYMENT TO: CHRISTIAN CHURCH

FOUNDATION

(MEMO NATIONAL HISPANIC WOMEN'S MINISTRY FUND)

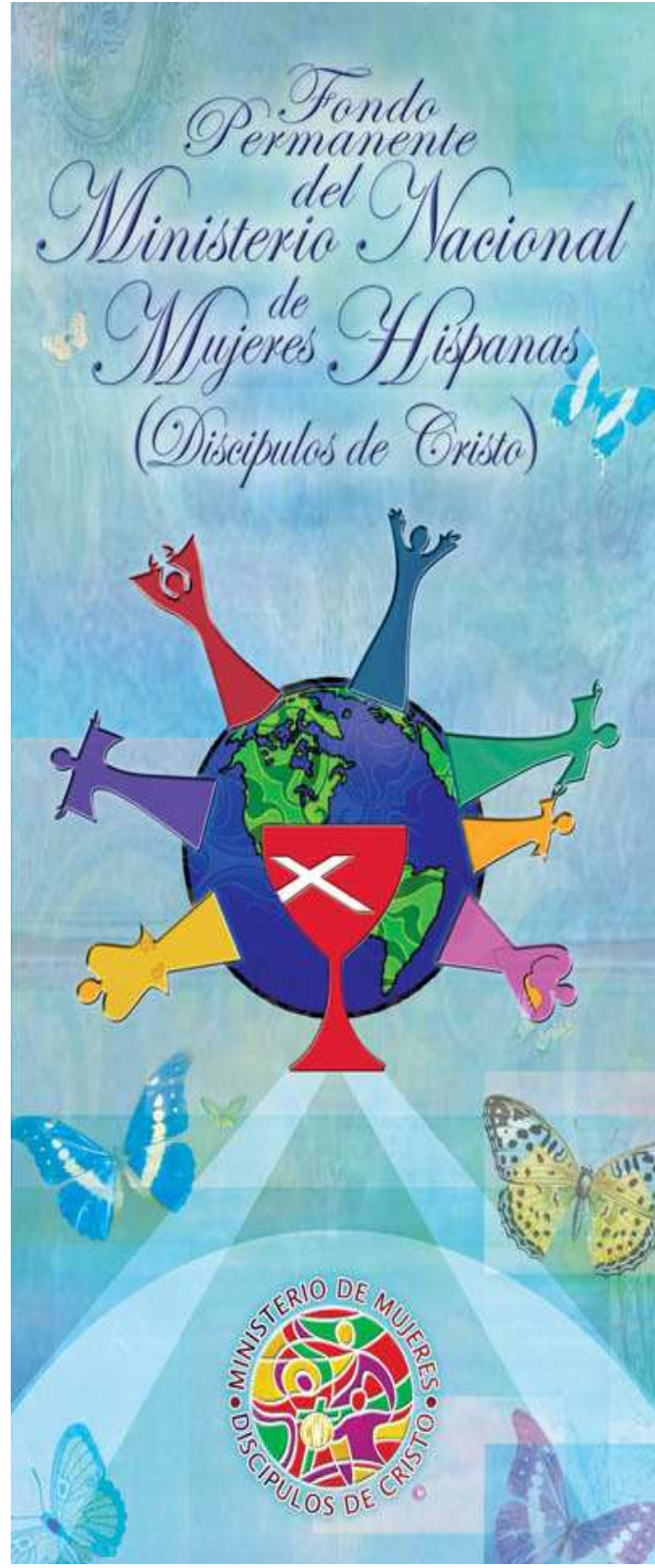
PO BOX 1986

INDIANAPOLIS, IN 46206-1986

QUESTIONS,, PLEASE CONTACT:

CHRISTIAN CHURCH FOUNDATION AT

1-800-668-8016



How was the National Hispanic Women's Ministry Permanent Fund established?

In 2006, a group of Hispanic women concern with the need of empowering women for ministry decide to establish the National Hispanic Women's Ministry Permanent Fund with special donations and other offerings collected in the 13th National Hispanic Assembly in Killeen, Texas. On August 2006, with the assistance of the Christian Church Foundation the National Hispanic Women's Ministry Permanent Fund was established with a total amount of \$3,514.50. The call continues for us to join this honorable task as we provide financial instruments that help empower Hispanic women from generation to generation.

Fondo Permanente del Ministerio Nacional de Mujeres Hispanas (Discipulos de Cristo)

Vision

To be educated women aware of the great responsibility God has placed in our hands for the establishmnet of financial resources that will continue to empower women for ministry.

Mission

Provide financial resources for educating and empowering women for ministry from generation to generation.



How can you help?

- Designate a percentage or a fixed dollar amount for the fund in your will or trust.
- Create a planned gift. The Christian Church Foundation, one of the general units of the church, has numerous gift opportunities available that not only benefit the donor's wishes, but also can create a source of income for the donor. Call 800-668-8016.
- Establish a named fund (\$1,000 minimum) in memory or honor of someone. Once the fund is established, additional contributions may be made at anytime.
- Make an outright gift.
- Designate the Nacional Hispanic Women's Ministry Permanent Fund as beneficiary of insurance / IRA's.
- Transfer stock.
- Encourage others to include the fund in their estate planning.